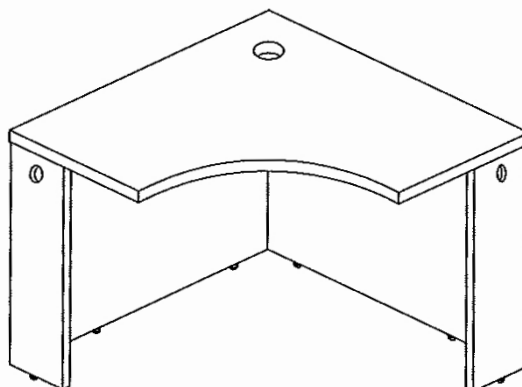
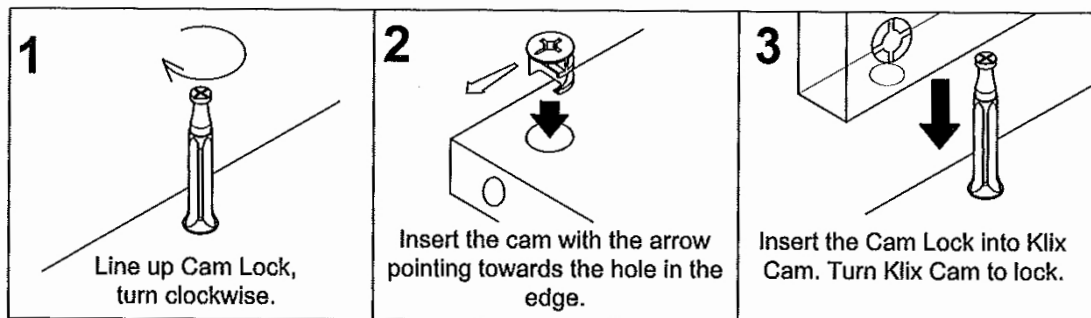
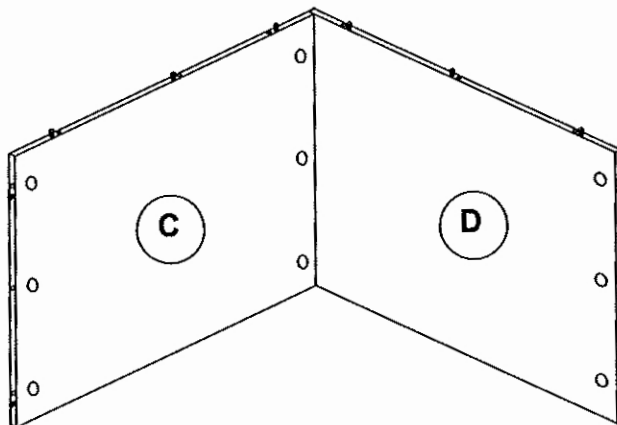


KLIX CAM INSTRUCTIONS

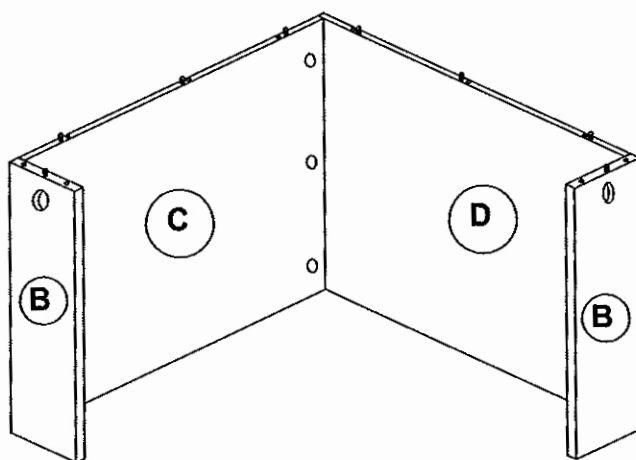


IMPORTANT !!

- Place all wooden parts on a clean and smooth surface such as a rug or carpet to avoid the parts from being scratched.
- Check that you have all parts and hardware.
- Remove all wrapping materials, including staples & packing straps before you start to assemble.
- Do not tighten any screws or bolts until the unit is completely assembled.
- Keep all hardware parts out of reach of children.

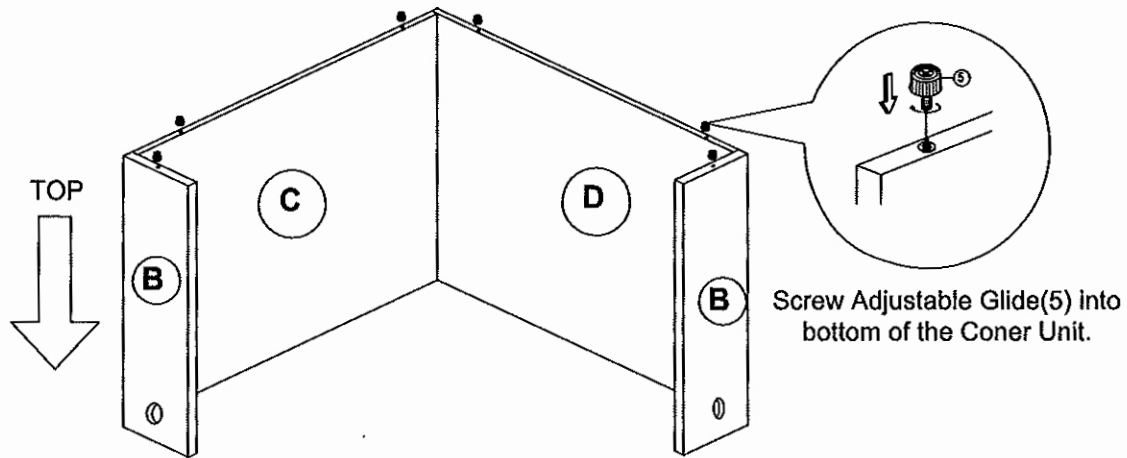
1

Attach the Back Panel (C) to
Back Panel (D) by using Cam
Lock (1) and Klix Cam (2).

2

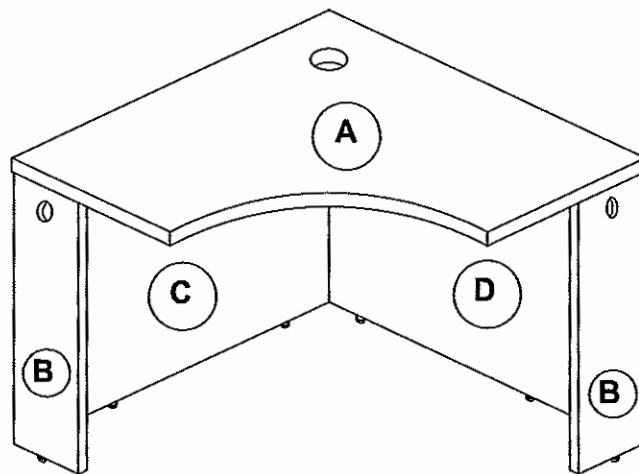
Attach the Side Panel (B) to
Back Panel by using Cam Lock
(1) and Klix Cam (2).

3



Turn over the Corner Unit to place the Adjustable Glide (5) to the bottom of the unit.

4



Attach the Top Panel (A) to Back Panel and Side Panel by using Cam Lock (1) and Klix Cam (2).